


Download!


# BINKY ACADEMY

Printables Set

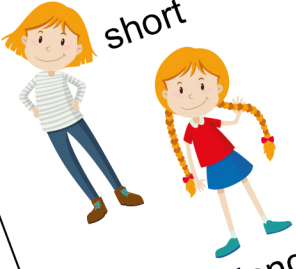
**WHAT IS MORE?**



**MATCH THE NUMBERS WITH OBJECTS**

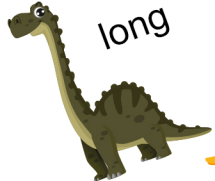


**LEARN OPPOSITE WORDS WITH PICTURES**




short

long



long



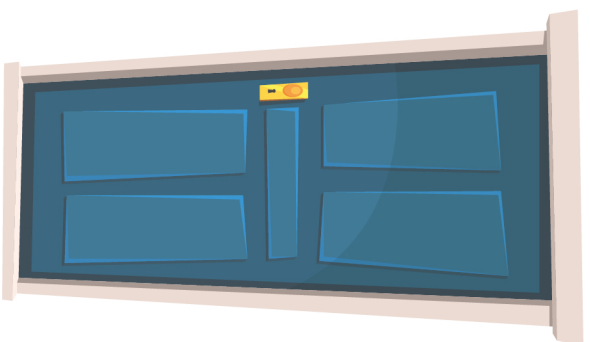
short



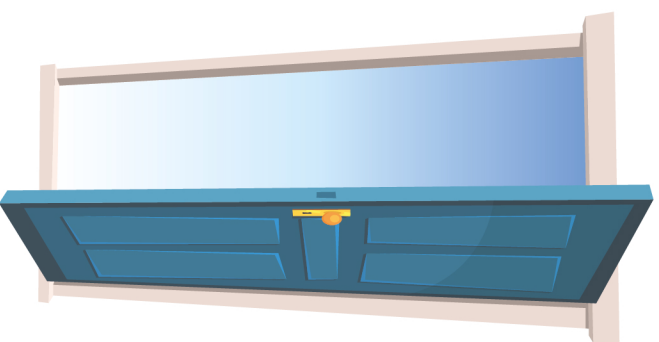
# LEARN OPPOSITE WORDS WITH PICTURES



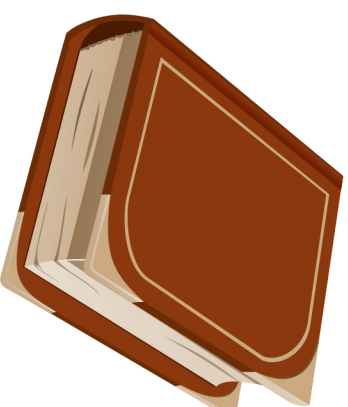
Closed



Open



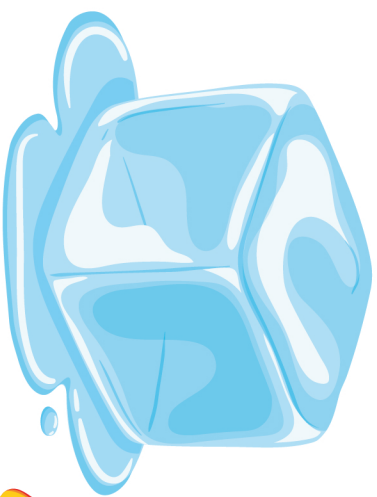
Closed



Open



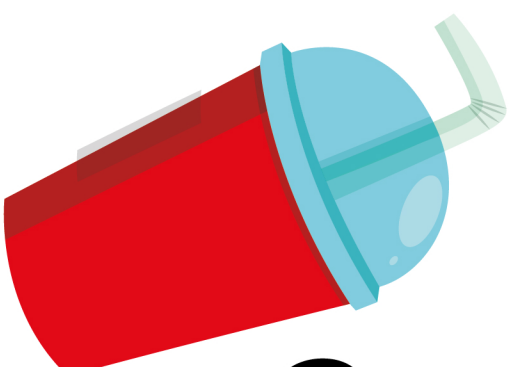
# LEARN OPPOSITE WORDS WITH PICTURES



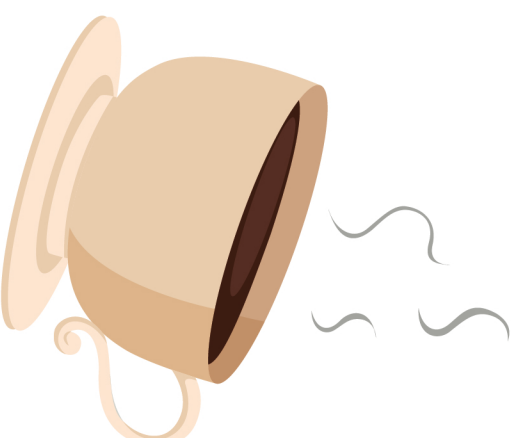
Cold



Hot



Cold

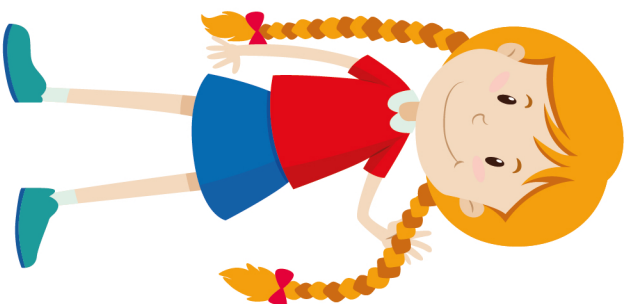


Hot

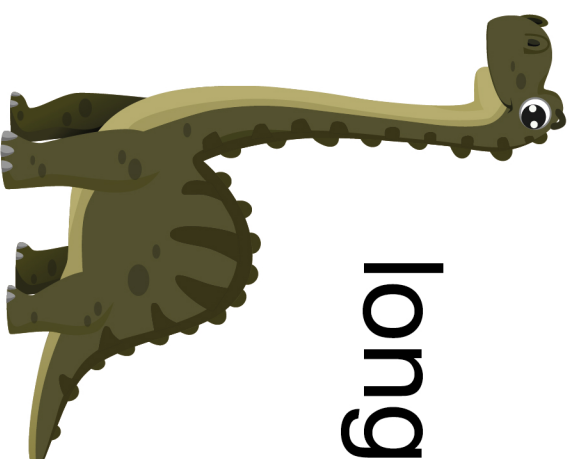
# LEARN OPPOSITE WORDS WITH PICTURES



short



long



long



short

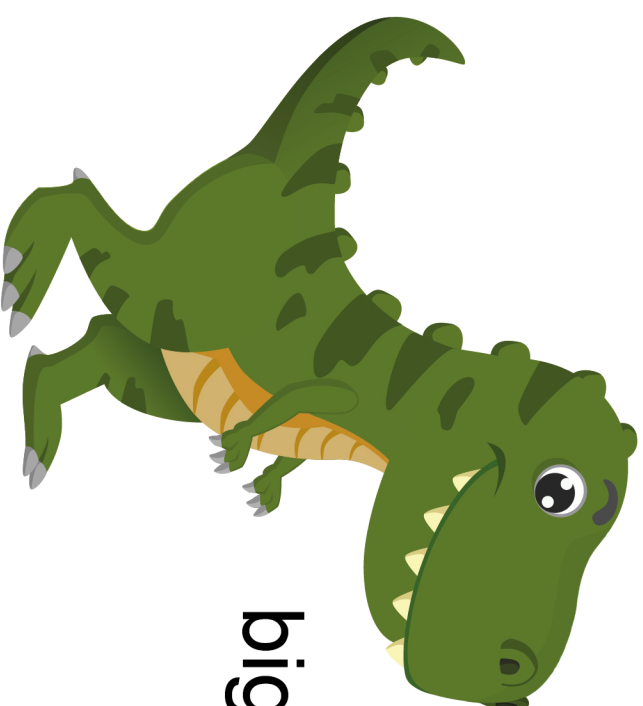
# LEARN OPPOSITE WORDS WITH PICTURES



big



small

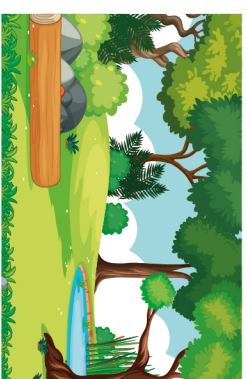


big



small

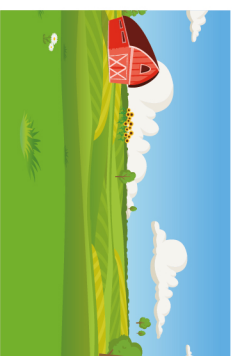
# MATCH WITH AN ARROW WHERE THESE ANIMALS LIVE



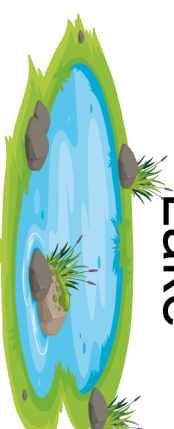
Forest



Sky



Lawn



Lake

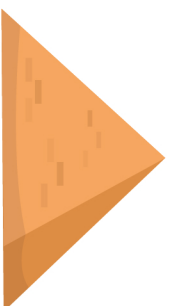
# MATCH THE OBJECTS WITH THE CORRECT SHAPE



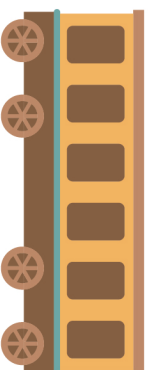
Triangle



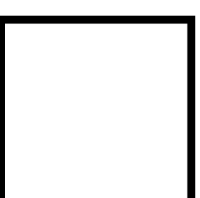
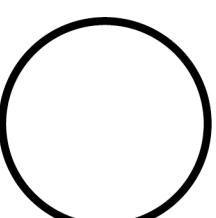
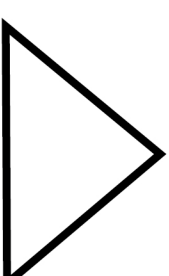
Rectangle



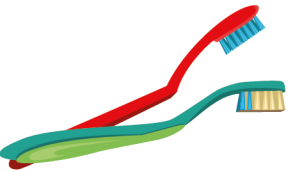
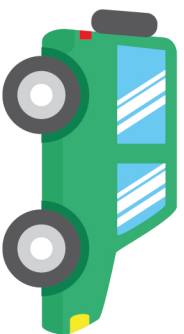
Circle



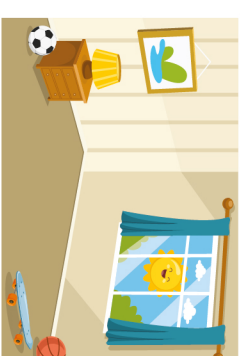
Square



# MATCH WITH AN ARROW WHERE YOU USUALLY FIND THESE OBJECTS



Bedroom



Garage



Bathroom



Kitchen

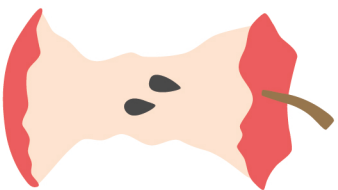




# MATCH WITH AN ARROW IF YOU CAN RECYCLE THE OBJECT OR NOT



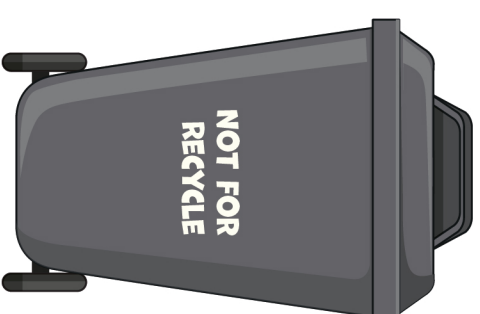
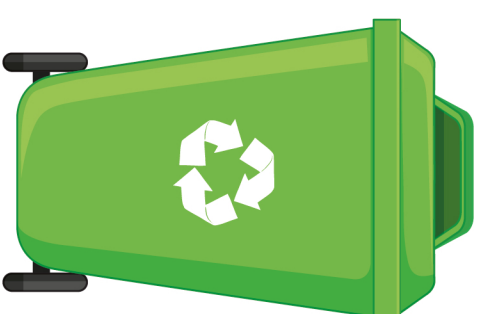
Apple Stub



Newspaper



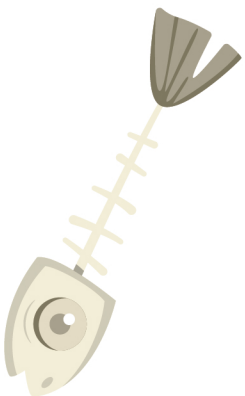
Egg shells



# MATCH WITH AN ARROW IF YOU CAN RECYCLE THE OBJECT OR NOT



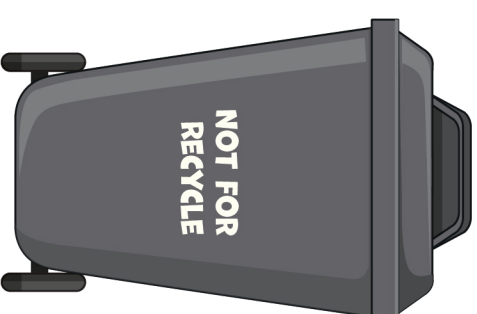
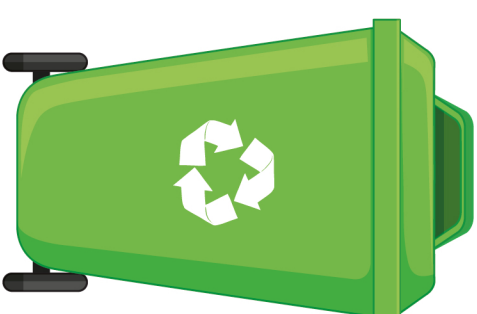
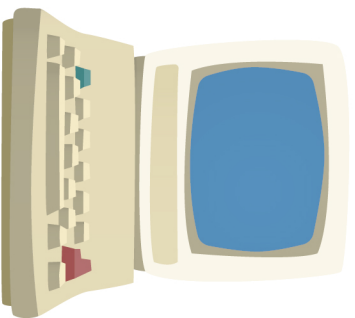
Fish bones



Used can



Old computer



# MATCH WITH AN ARROW IF YOU CAN RECYCLE THE OBJECT OR NOT



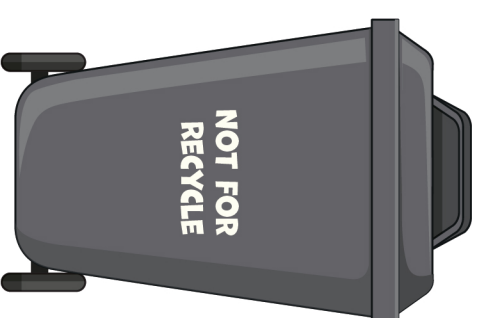
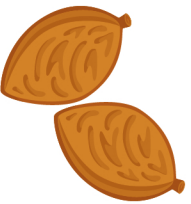
Glass bottle



Plastic bottle



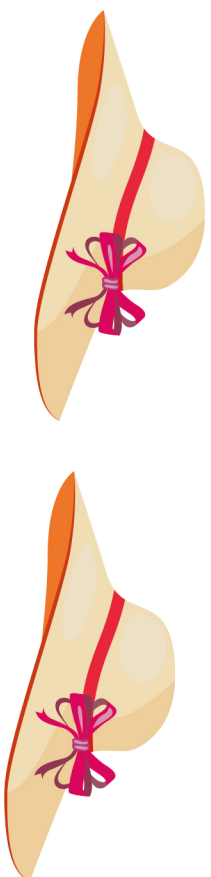
Apricot seeds



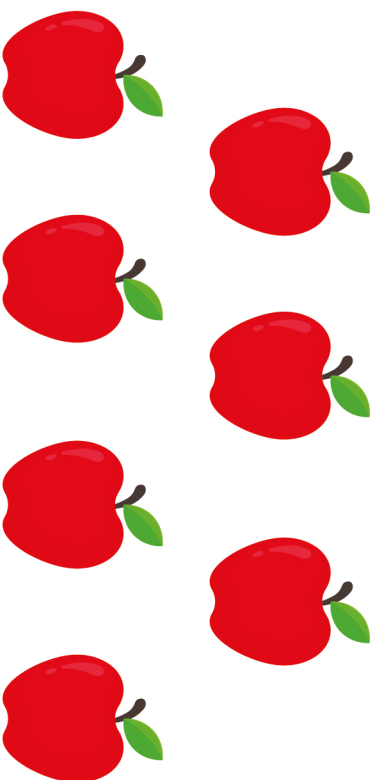
# MATCH THE NUMBERS WITH OBJECTS



2

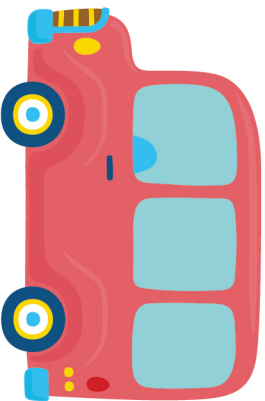


7

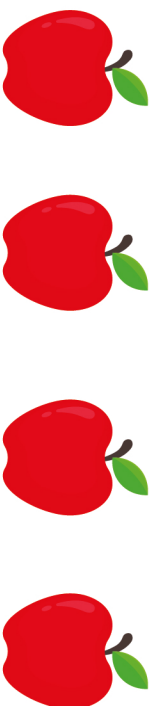


3

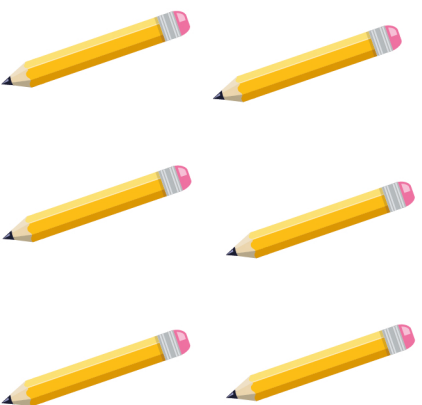
# MATCH THE NUMBERS WITH OBJECTS



4

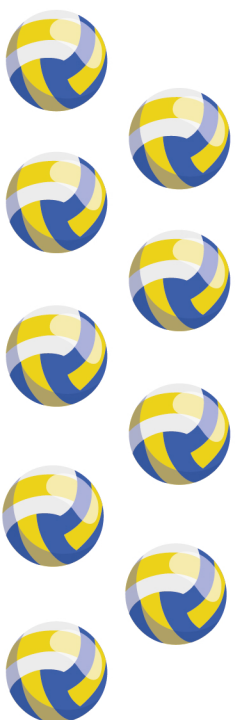


6

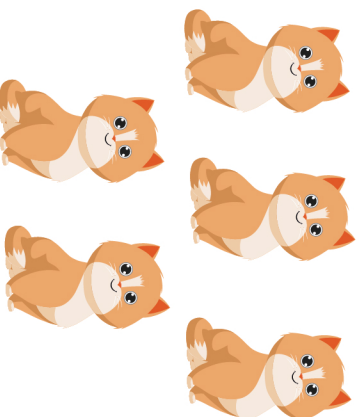


1

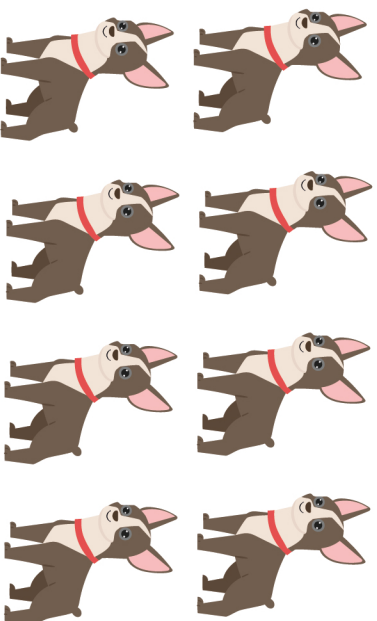
# MATCH THE NUMBERS WITH OBJECTS



8

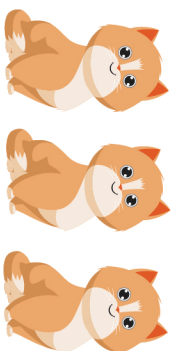


9



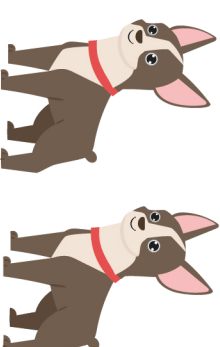
5

# WHAT IS MORE?

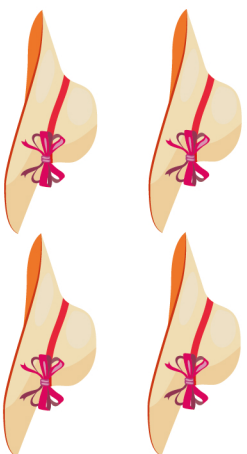


5 cats

OR



2 dogs

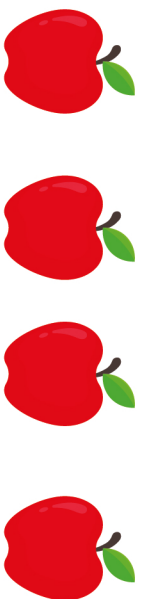


4 hats

OR



8 balls



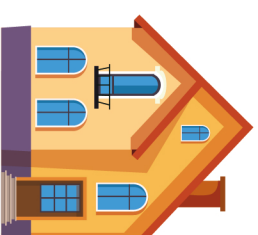
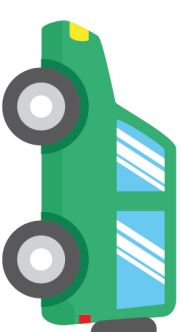
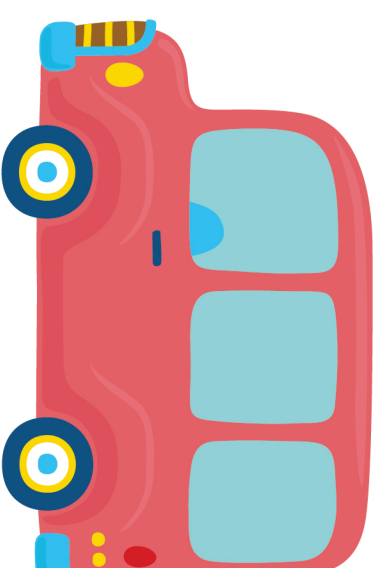
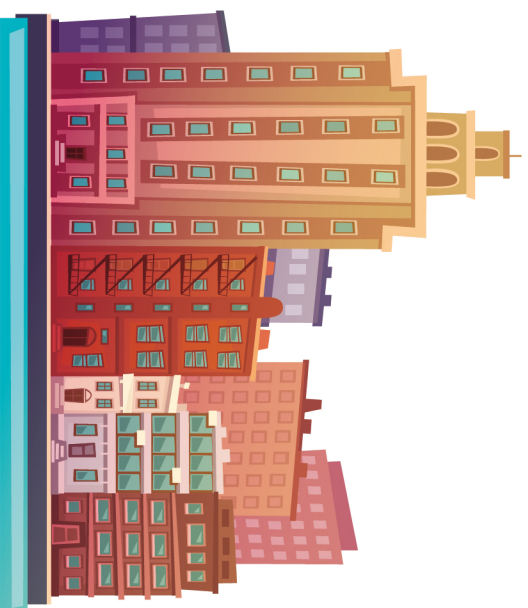
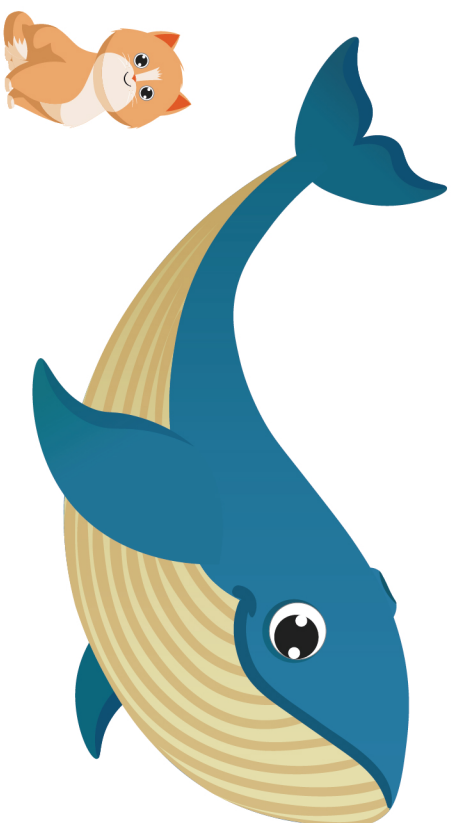
4 apples

OR



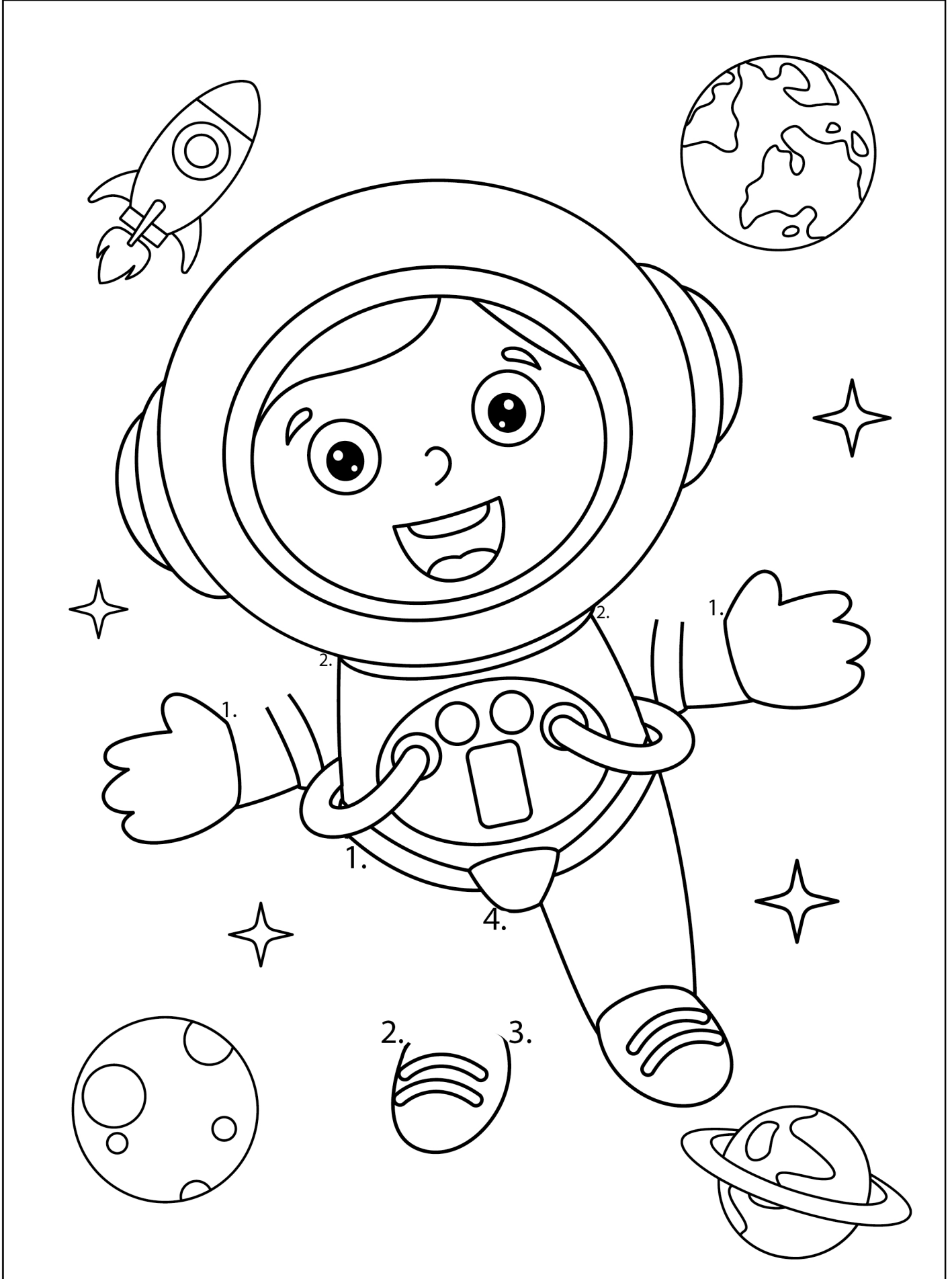
2 oranges

# WHICH OBJECT IS BIGGER THAN THE OTHER

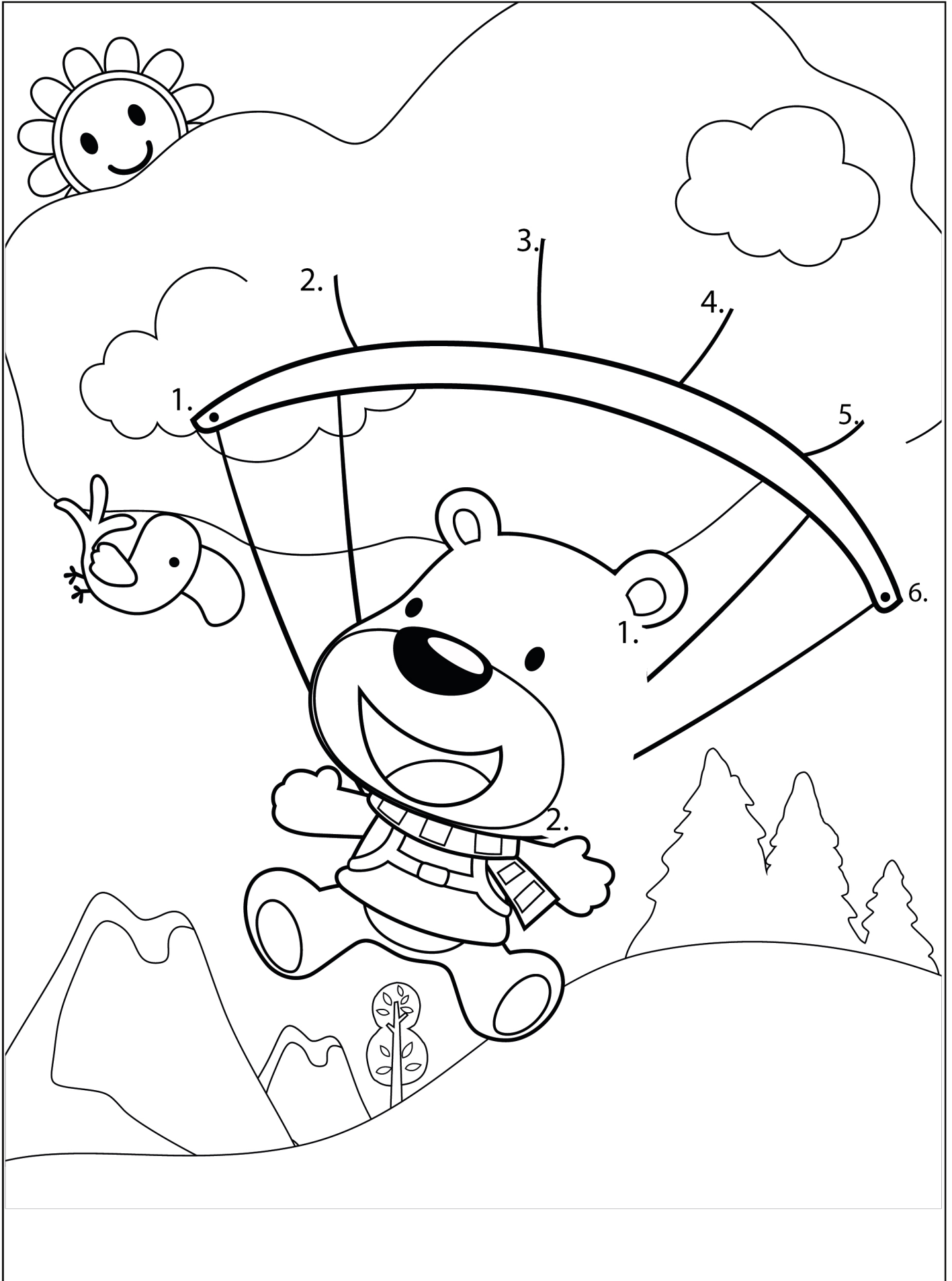




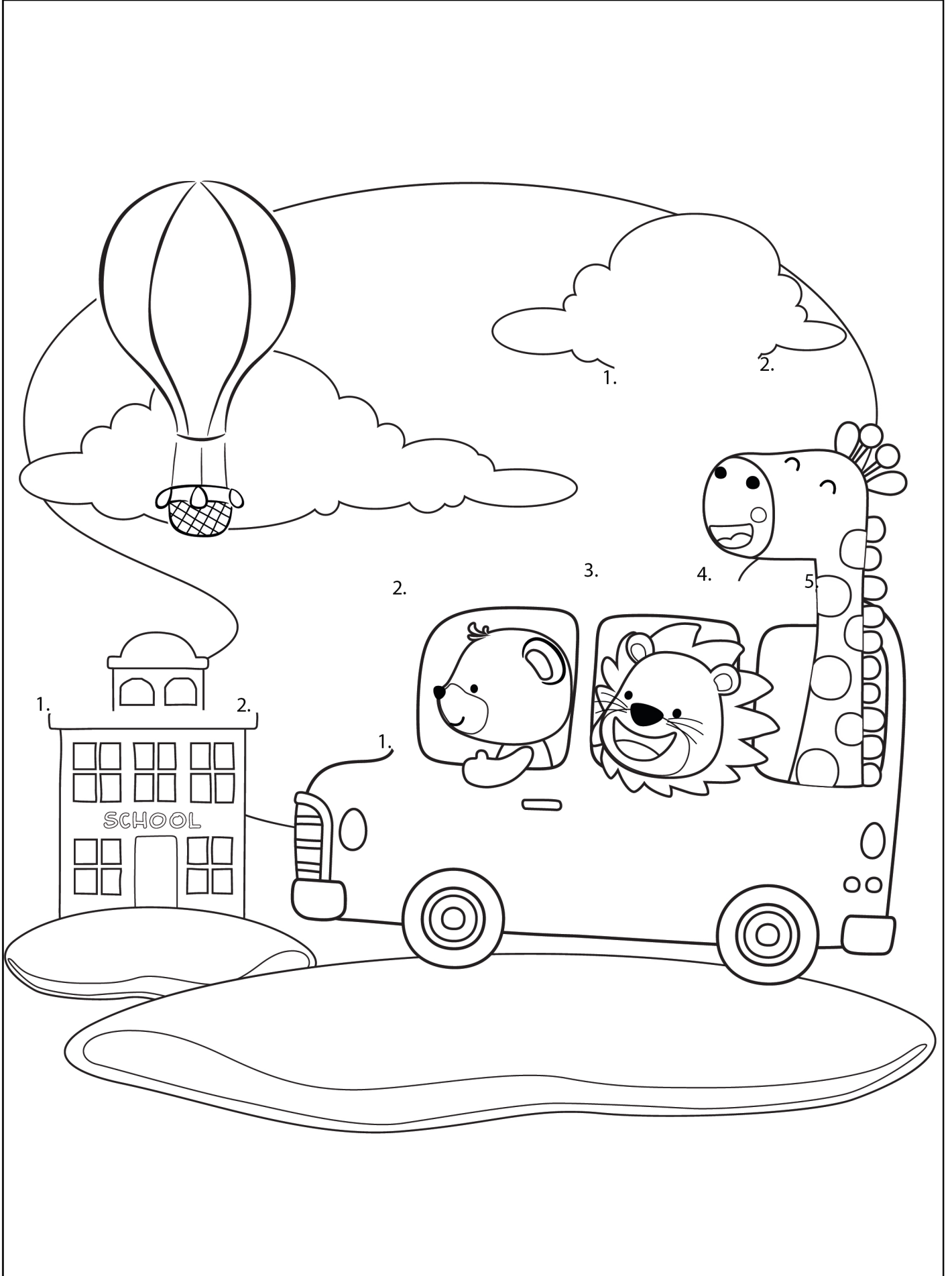
# JOIN THE DOTS IN NUMERICAL ORDER TO COMPLETE THE PICTURE



# JOIN THE DOTS IN NUMERICAL ORDER TO COMPLETE THE PICTURE



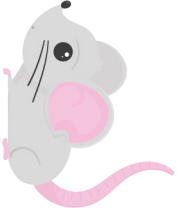


# JOIN THE DOTS IN NUMERICAL ORDER TO COMPLETE THE PICTURE




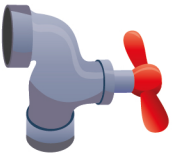

# COMPLETE THE WORDS WITH THE RIGHT LETTER



		a	t
		a	t
		a	t



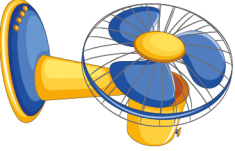
# COMPLETE THE WORDS WITH THE RIGHT LETTER



		a	p
		a	p
		a	p

# COMPLETE THE WORDS WITH THE RIGHT LETTER

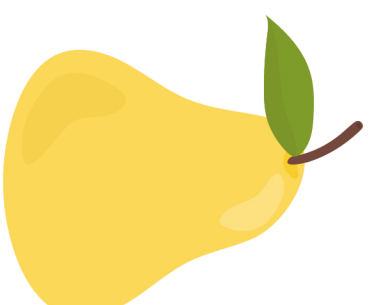


		a	n
		a	n
		a	n

**FIND THE OBJECTS  
THAT START WITH THE LETTER D**



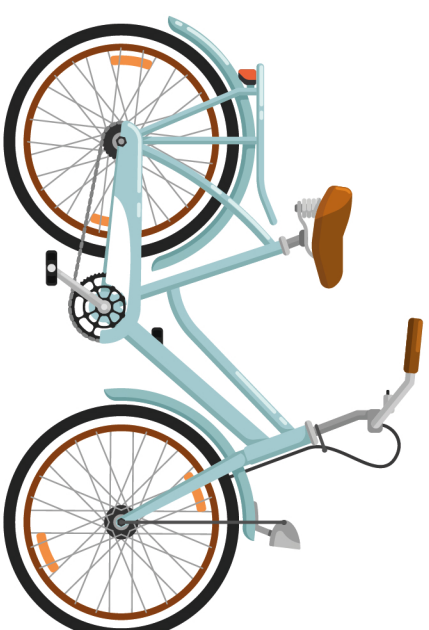
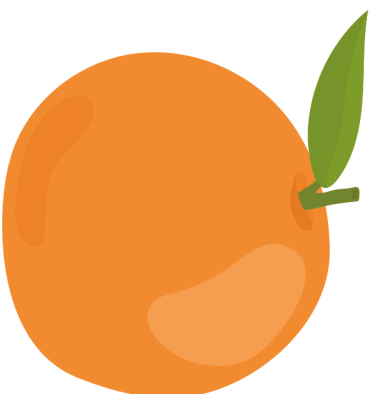
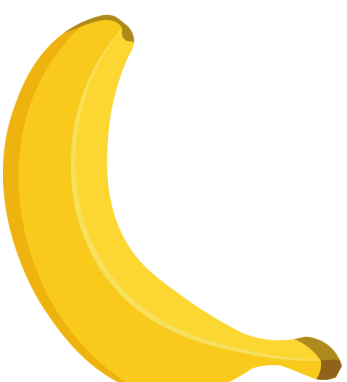
**A**



**FIND THE OBJECTS  
THAT START WITH THE LETTER B**



**B**

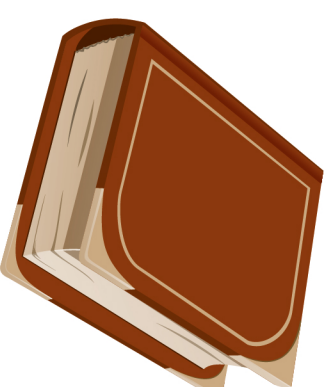
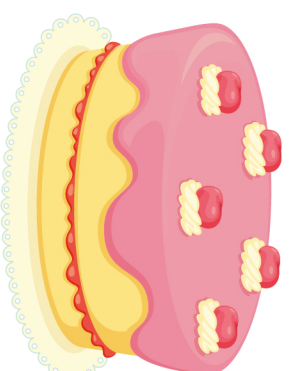
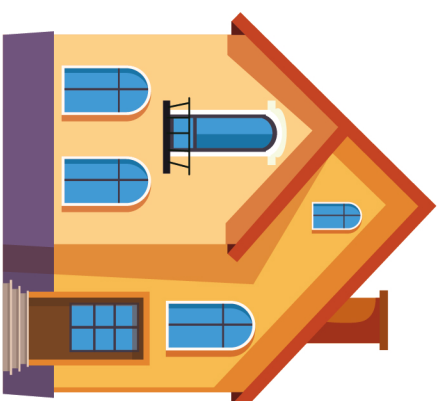




# FIND THE OBJECTS THAT START WITH THE LETTER C



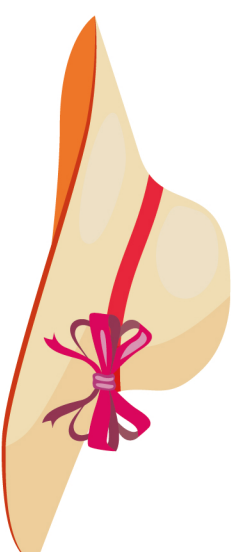
C



# FIND THE OBJECTS THAT START WITH THE LETTER D

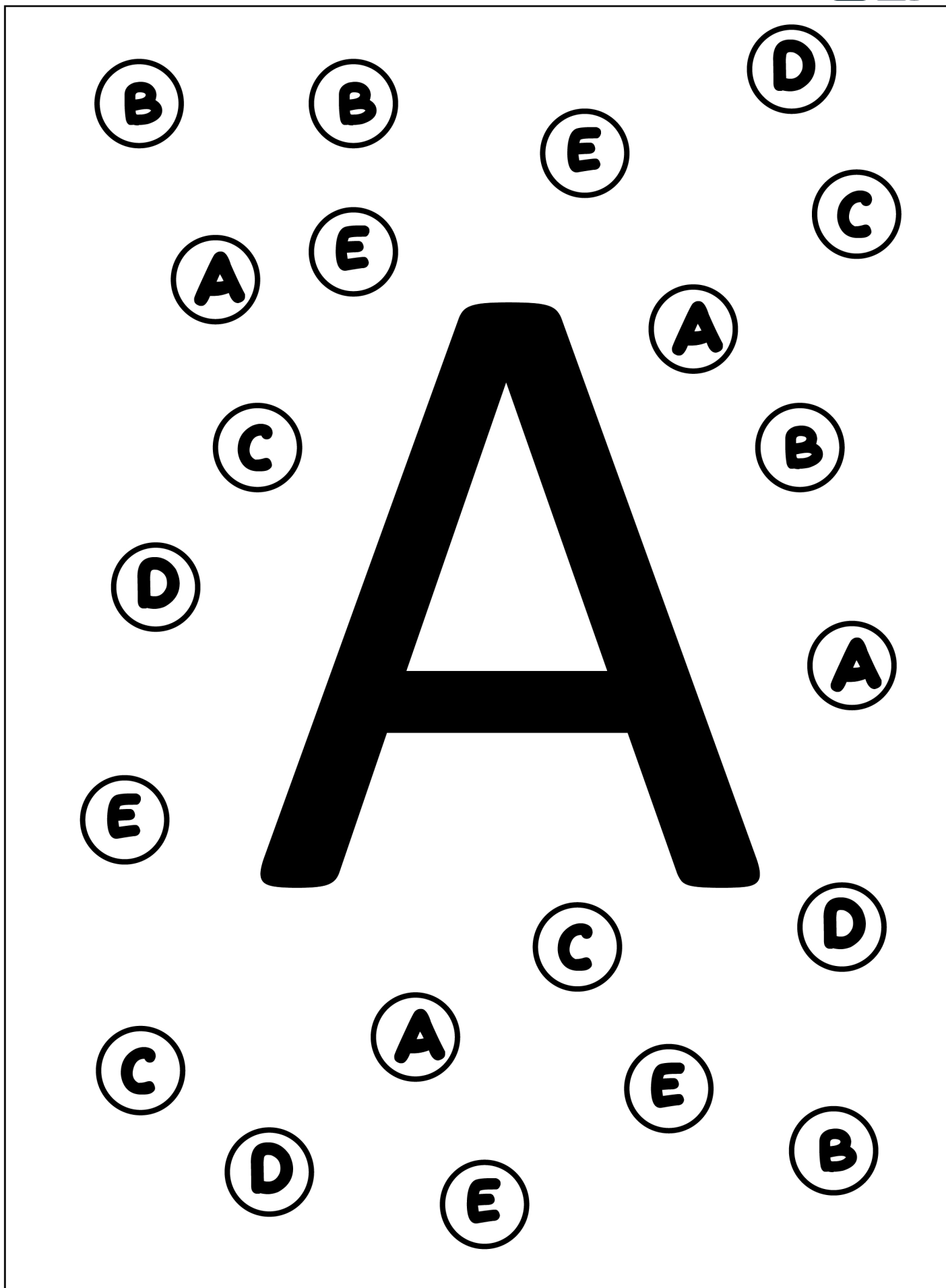


# D





# FIND AND COLOR THE LETTER A





# FIND AND COLOR THE LETTER B

A large rectangular area containing a central, very large, bold black letter 'B'. Surrounding this central letter are 20 smaller circles, each containing a single uppercase letter. The letters are scattered throughout the area, including 'B', 'A', 'D', 'E', and 'C'. The task is to identify and color the letter 'B' among the other letters.



# FIND AND COLOR THE LETTER C

A large black letter 'C' is centered on the page. Surrounding it are 25 smaller circles, each containing a letter. The letters are: A, D, E, D, B, A, C, E, D, B, A, D, E, A, B, D, A, C, D, B, A, C, C.



# FIND AND COLOR THE LETTER D

A large rectangular area containing a central, large, bold black letter 'D'. Surrounding this central letter are numerous smaller circles, each containing a single uppercase letter. The letters are scattered throughout the space, including 'B', 'E', 'C', 'A', and 'D'. The task is to identify and color the letter 'D' among the other letters.

# FIND AND COLOR THE LETTER E



A large rectangular area containing a central, large, bold black letter 'E'. Surrounding this central letter are numerous smaller circles, each containing a single uppercase letter. The letters are scattered throughout the space, including 'A', 'B', 'C', 'D', and 'E'. The task is to identify and color the letter 'E' among the other letters.